

Human Body

Circle the letter of the answer that best completes the statement or answers the question.

1. To stay alive and do their work, cells need

- A. juices.
- B. nutrients.
- C. saliva.
- D. enzymes.

2. Food stays in the stomach

- A. ten to twelve hours.
- B. eight to ten hours.
- C. two to four hours.
- D. less than one hour.

3. In the stomach food is changed into nutrients by

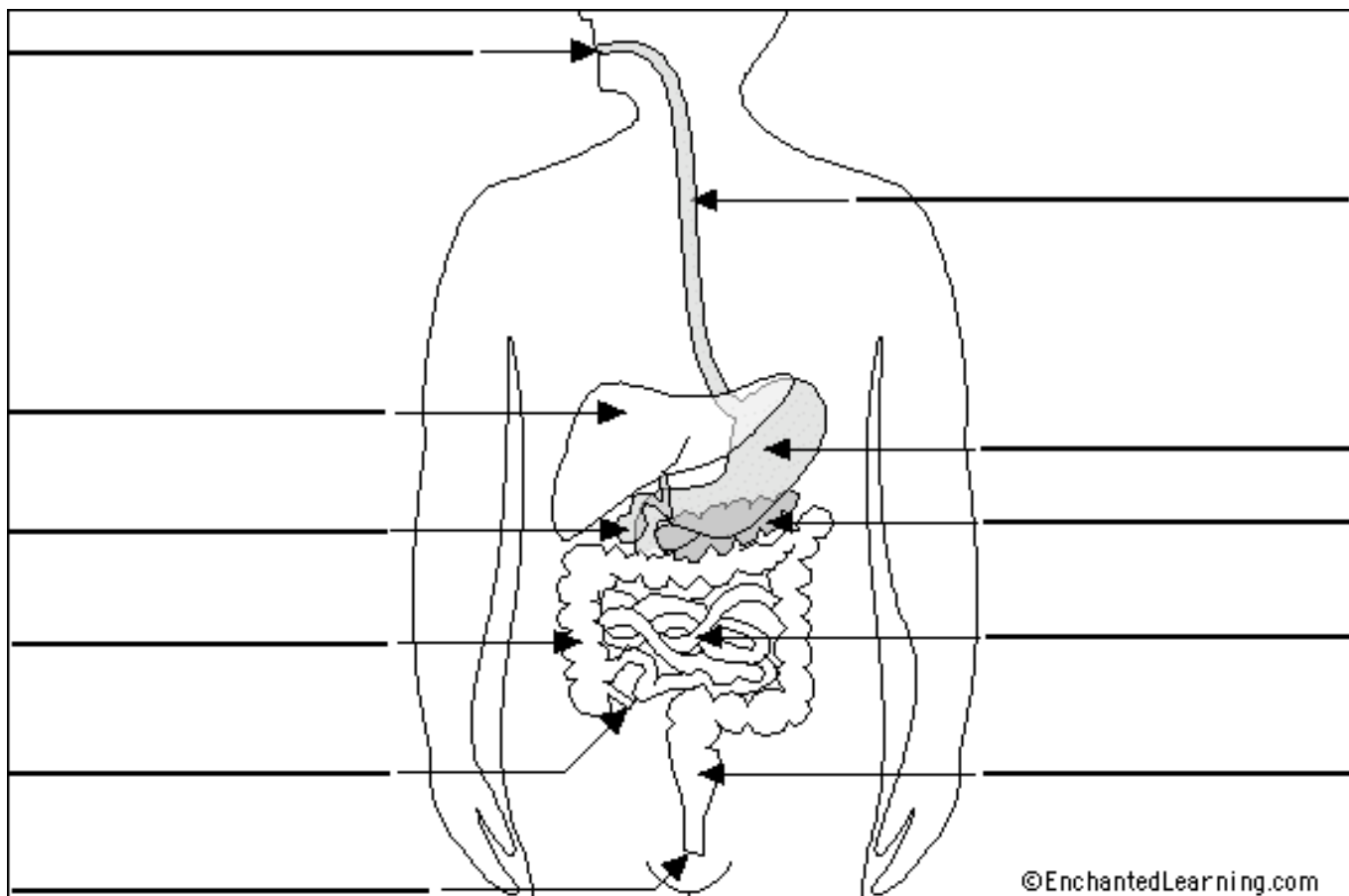
- A. glands
- B. saliva
- C. enzymes
- D. liquid

4. Digestion begins in the

- A. mouth
- B. esophagus
- C. stomach
- D. colon

5. What are the 3 important things that cells do with the nutrients they get from food?

6. Label the diagram using the following terms: esophagus, large intestine, small intestine, liver, stomach, and mouth. (There are more lines than terms to use)



7. Using the above labels, describe what happens as a peanut butter sandwich moves through the parts of the digestive system. Be sure to explain what each part does.
