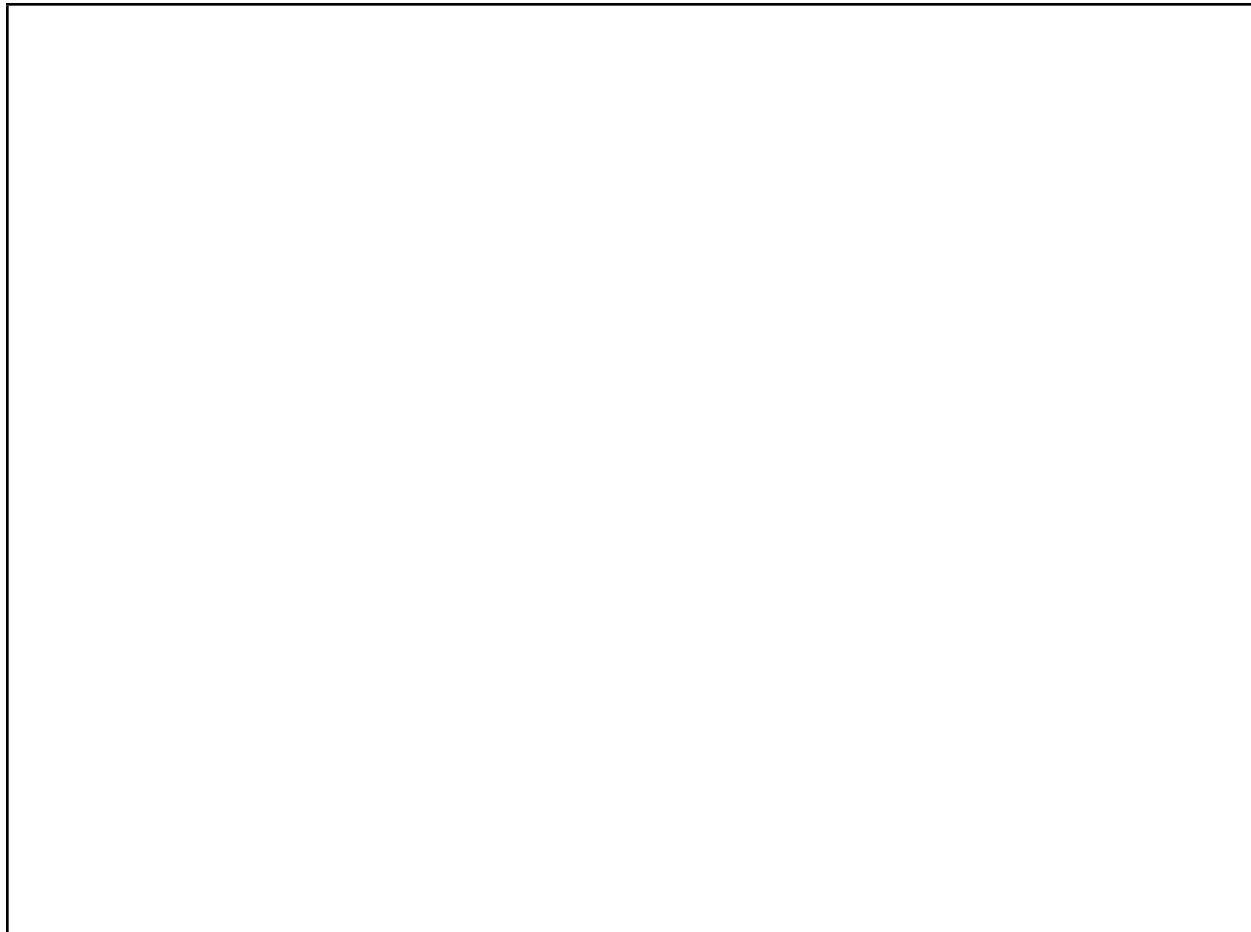


THE INCREDIBLE EDIBLE CELL!

KEY VOCABULARY			
Term	Definition	Color Key	Food item
Nucleus	spherical body containing many organelles, including the nucleolus. The nucleus controls many of the functions of the cell (by controlling protein synthesis) and contains DNA (in chromosomes). The		Heart
Cell Membrane	the thin layer of protein and fat that surrounds the cell. The cell membrane is semipermeable, allowing some substances to pass into the cell and blocking others.		Crust
Cell Wall	a thick, rigid membrane that surrounds a plant cell . This layer of cellulose fiber gives the cell most of its support and structure. The cell wall also bonds with other cell walls to form the structure of the plant.		NA-- only in plants
Mitochondria	The mitochondrion converts the energy stored in glucose into ATP (adenosine triphosphate) for the cell.		M&Ms
Vacuoles	fluid-filled, membrane-surrounded cavities inside a cell. The vacuole fills with food being digested and waste material that is on its way out of the cell.		Hugs
Cytoplasm	the jellylike material outside the cell nucleus in which the organelles are located.		Pudding

Draw your cell below:

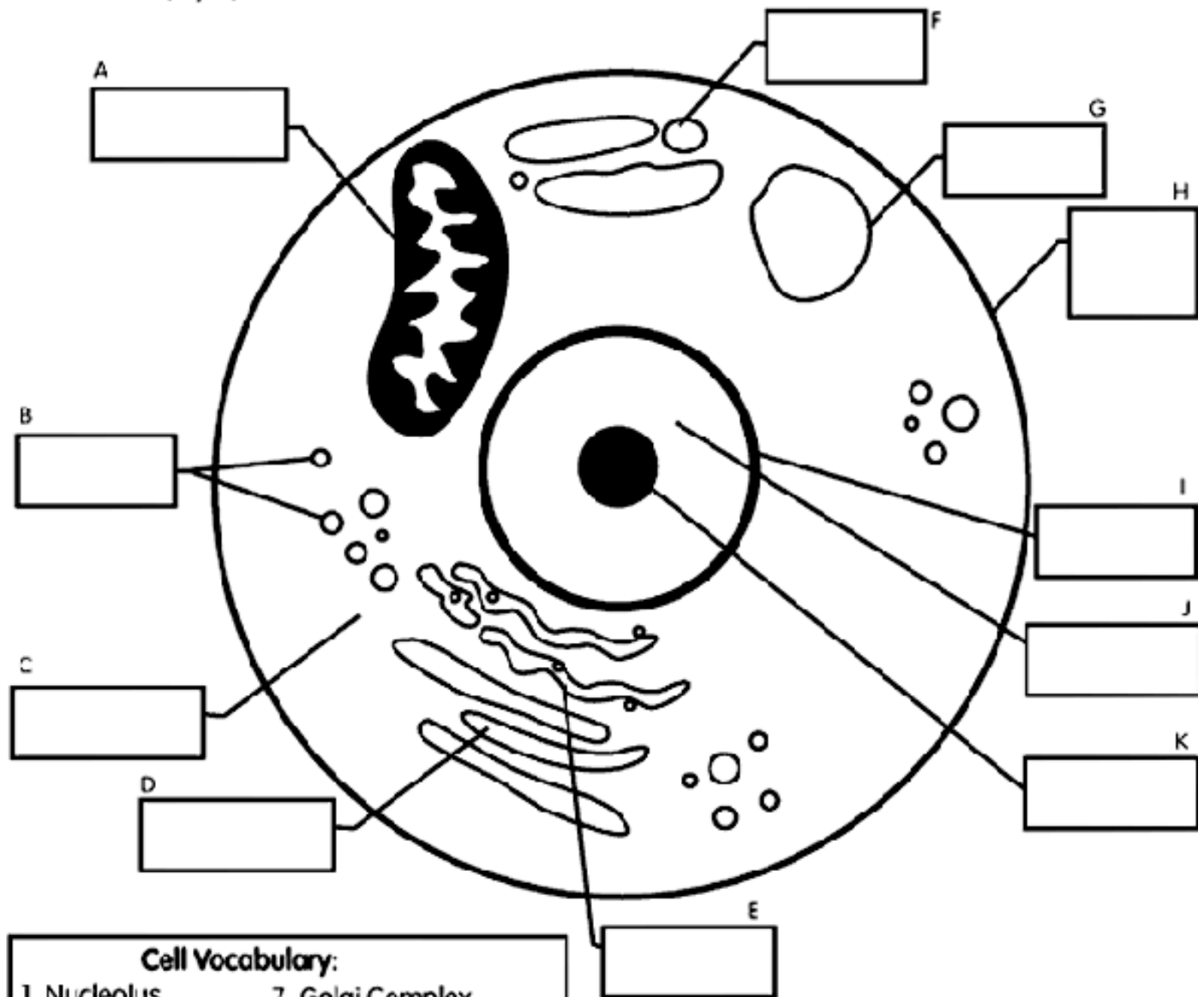


Name:

THE INCREDIBLE EDIBLE CELL!

HUMAN CELL

Color the parts of the cell. Use the words in the box below to identify the part of the human cell. The cell is the basic unit of a human body. There are more than one billion cells in each human body. Cells group together to make skin, bones, and blood. Inside the cells nucleus is DNA, which identifies the color of hair, eyes, and skin. DNA also affects the we look and act.



- | Cell Vocabulary: | |
|------------------|---------------------------------|
| 1. Nucleolus | 7. Golgi Complex |
| 2. Nucleoplasm | 8. Smooth Endoplasmic Reticulum |
| 3. Mitochondrion | 9. Cell Membrane |
| 4. Nucleus | 10. Vacuole |
| 5. Cytoplasm | 11. Rough Endoplasmic Reticulum |
| 6. Ribosome | |

- ANSWERS**
- A=3 E=11
 B=6 H=9
 C=5 G=10
 D=8 F=7
 K=1

Name: _____

THE INCREDIBLE EDIBLE CELL!

Name: